

HAWORTH

Providing an Optimal Work Experience to Employees

March 2021

Case Study
Global provider of IT infrastructure

Location
Manila, Philippines

Design Firms
IA Interior Architects
Group 3 Design Studio



How do you provide people with a flexible workspace adapted to their needs from today and tomorrow?



Overview

Operating in the Philippines since 2014, our customer wanted to consolidate its offices which split on separate floors in their previous location. The purpose was to create an activity-based workspace with a range of applications delivering the optimum working experience to the employees.

The project results from a close collaboration between North American and Philippine teams, from the customer, the architects and Haworth sides. We carried out the project remotely, from different time zones and - to a certain degree - in isolation. All the discussions, negotiations and closing of the deal happened during the lockdown. Communication, accuracy and teamwork were essential.

The project demonstrated Haworth global expertise to our customer but also showcased how cohesive our teams are.

Specifications:



Location

Manila, The Philippines

Project specs

Timeframe of the project: 24 weeks
(phases 1 & 2)

Project Size

6,817 sqm
5 floors
982 workstations

Objective

Create an ergonomic working environment, providing alternative spaces for the employees to work, collaborate and recharge.

Solution

Provide a holistic workspace, supporting the changing needs of the employees throughout the workday.

Result

A layout that will support the evolution of an agile work style, while creating a relaxed atmosphere for the teams, where individual well-being is paramount.



Offering the best working experience

Ideally, the workplace provides people with resources to meet their job responsibilities. How well the physical workplace provides those resources communicates to employees how the organization prioritizes meeting their needs.

Recognizing its employees as the company's greatest assets, the project team delivered a people-centric redesign to better support well-being and performance through spaces, those being not only workspaces but also living spaces.



In the open Production Area, ergonomic Height Adjustable Tables (HAT) and Soji task chairs address the needs for comfort and efficiency of the programmers coding software.

On the threshold of the workspaces - and adjacent to the libraries - are the Recharge rooms. Lounge furniture and curtains allow for rest and privacy.

Solution

An activity-based work environment mirroring employee behaviour.

When the workplace focuses on people and the tasks they do, employees are provided with a choice of settings that support their activities throughout the day.

In addition to the open Production Area and its counterpart, the Recharge Room, our customer wanted to offer quiet spaces. When an office lacks flexible space, those quiet spaces become conference rooms. As a result, many offices need more spaces for meetings, whether scheduled or ad-hoc. The Huddle Room, a small meeting zone equipped with audio, video, and display software, helps solve this problem.



Employees can choose between various meeting rooms ranging from 4-10 pax for a better working experience. When they do not need to join a large videoconference or training session, they can meet in a small group in the Huddle Rooms.

For a private conversation or a short time of focus, Phone Booths are at their disposal.

Solution



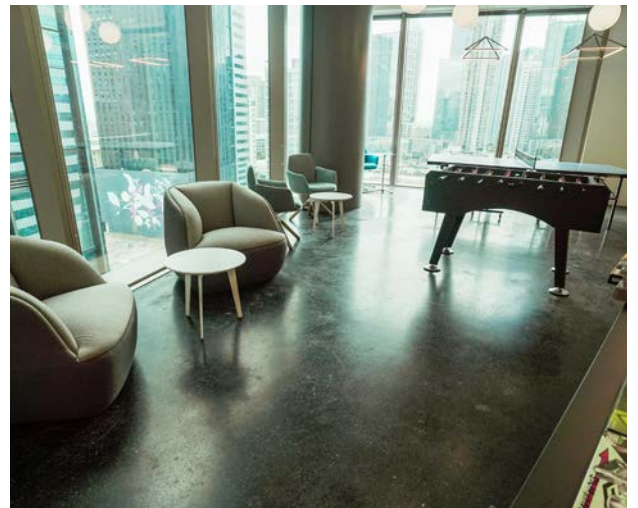
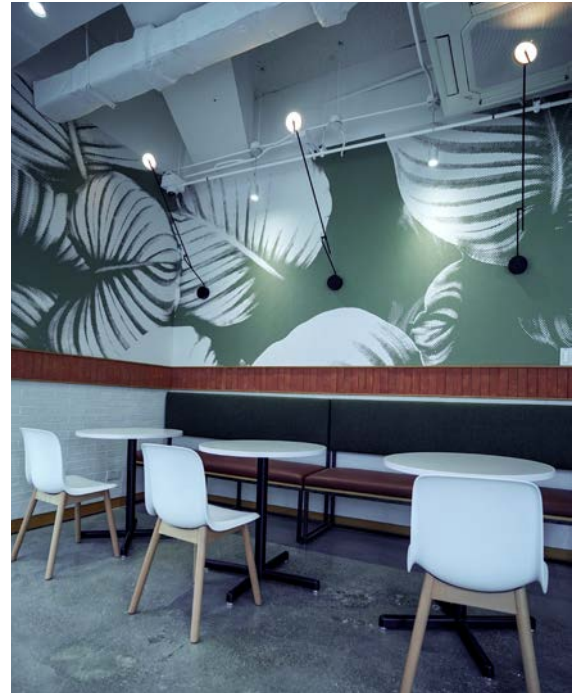
On each of the five floors, a Library encourages employees to have time offs and breaks to take care of themselves. Accessible by a secret door, the Library complements the Recharge room nearby. The residential feel of the Library invites calm and comfort.

Our customer provides dedicated spaces for nursing moms. Providing Mothers Rooms in the office helps women balance both their career and family passions.

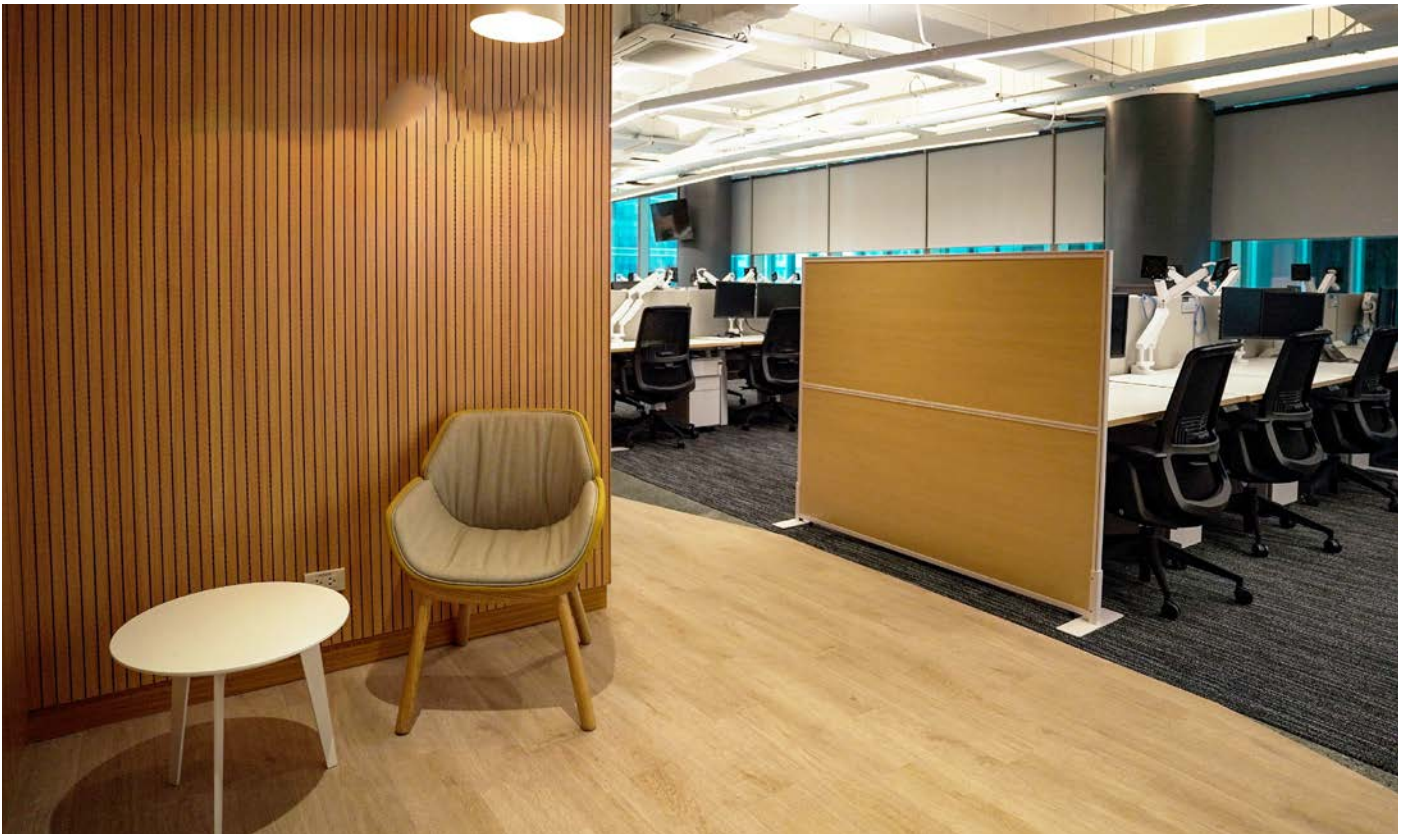
Creating social spaces that inspire collaboration

Most of the reason for coming to the office is that the environment allows social interaction daily. And that is just as valuable to employers as it is to employees.

Game Rooms and Pantry areas help employees engage and share ideas readily. A casual chat over lunch can spark an idea. Bumping into a colleague on the way to the coffee machine or playing together scrabble or table football can lead to collaboration. And it is why our customer asked us to create social spaces.



The Game Rooms and the Cafeterias encourage serendipitous conversations and connect people in different neighbourhoods.



The variety of workspaces give people choices for where to work in ways that best suit their style and feel productive. Our customer granted us perfect satisfaction survey result upon handover.

Applications provided:

- Open office/ production
- Private offices
- Training rooms
- Phone rooms
- Huddle rooms
- Meeting rooms
- Conference rooms
- Recharge rooms
- Open Collaborative
- Library
- Reception
- Café/ All Hands/ Pantry
- Game room
- Clinic
- Mother's rooms
- Break room

Featured Haworth products:

- HAT Elements
- Tibas
- Planes
- Intuity
- Soji Task Chair
- Very Side Chair
- M Series Mobile Pedestal
- Zgonic Dual Monitor Arms
- Poppy Lounge
- Maria table
- Audience Conference
- Boss Design Kruze Chair (HC)
- Gan Rug (HC)
- 3rd Party loose furniture